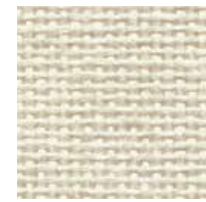
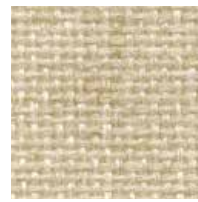


FR701® 2100

Panel Acoustic



Eggshell
144



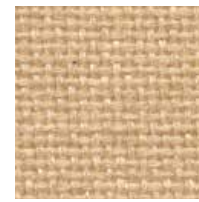
Wheat
130



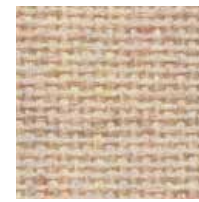
Bone
748



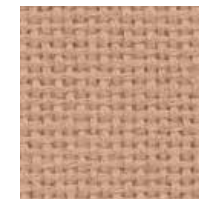
Buff
460



Straw
747



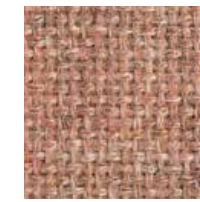
Vanilla Neutral
403



Terra
751



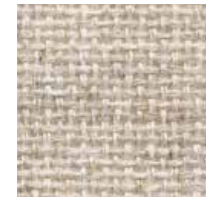
Cherry Neutral
400



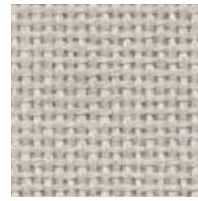
Cinnabar
422



Rose Quartz
390



Quartz
380



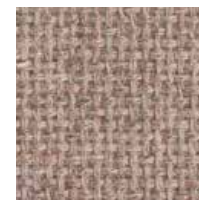
Pearl
481



Desert Sand
758



Apricot Neutral
404



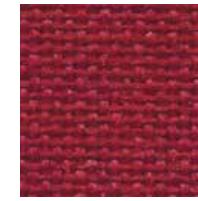
Pumice
423



Bronze
545



Sienna
475



Red
799



Claret Accent
418



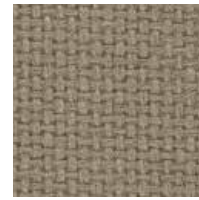
Deep Burgundy
556



Sunshine
797



Light Moss
754



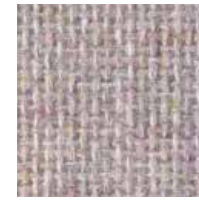
Earth
792



Moleskin
796



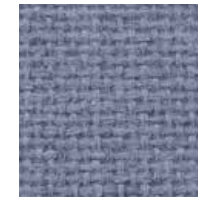
Chocolate
793



Lavender Neutral
405



Lilac
752



Violet
753



Amethyst
424



Iris
798



Dune
749



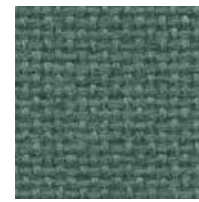
Leaf
755



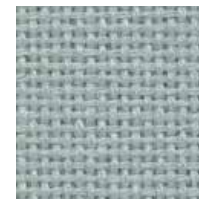
Stream
757



Aquamarine
381



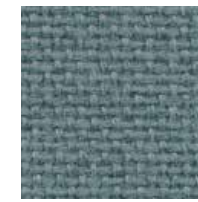
Blue Spruce
467



Eucalyptus
468



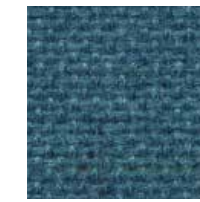
Green Neutral
402



Lake
756



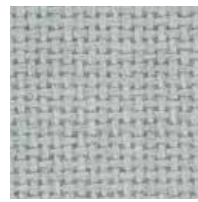
Chrome Green
549



Ultramarine
470



Verte Papier
561



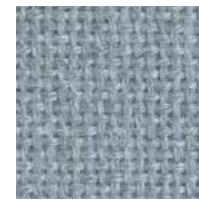
Coin
794



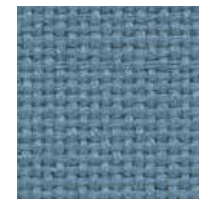
Blue Papier
539



Blue Neutral
401



Crystal Blue
175



Bayberry
486



Wedgewood
150



Cobalt
420



Baltic
153



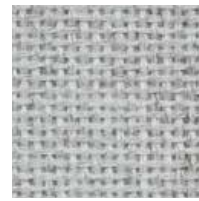
Blue Plum
553



White
224



Opal
394



Silver Papier
538



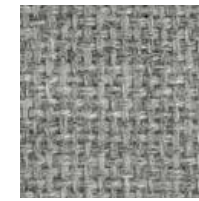
Silver Neutral
406



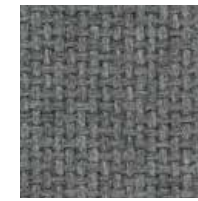
Cement Mix
750



Steel Grey
471



Grey Mix
238



Flannel
795



Medium Grey
298



Black
408

FR701® 2100

Panel
Acoustic

Specifications

Content

100% post-consumer recycled polyester

Weight

16.0 ± 0.5 oz./lin. yd.

Width

66" min. useable


Repeat

none


Cleaning Code


Standard Care Label W-S. Clean with water based cleaning agents, foam or pure, water free solvents. Vacuuming or light brushing is recommended to prevent dust and soil buildup.

Performance

 **Colorfastness to Light (AATCC 16 Option 3)**
Grade 4 min. at 40 hours

 **Colorfastness to Crocking (AATCC 8)**
Grade 4 min. dry & Grade 3 min. wet

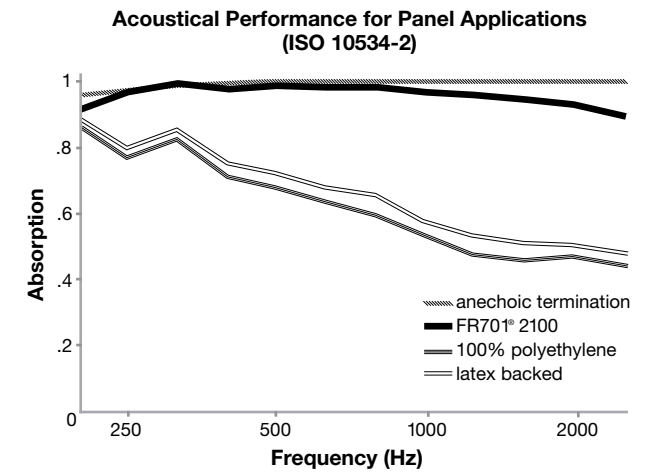
 **Breaking Strength (ASTM D5034)**
150 lbf min. warp and fill

 **Flammability (ASTM E84)**
Class I or A

*ACT® registered certification marks.

Acoustical Performance

The plot below summarizes impedance tube measurements of absorption of an anechoic termination and various fabrics in front of the anechoic termination.



NRC of anechoic termination
1.00

NRC of fabric in front of anechoic termination
.95

Miscellaneous

Every effort has been made to ensure color accuracy of the digital images, however, please order a sample before specification. Application testing of this product is recommended. Colors may vary between dye lots. This is a non-directional fabric.

Proudly woven in the USA supporting our local communities.

Visit guilfordofmaine.com for samples.



Terratex is a registered trademark of True Textiles, Inc. and designates fabrics that are made from 100% recycled or compostable material using increasingly sustainable manufacturing practices to produce a high quality product that is recyclable at the end of its useful life.



CO₂ emissions from 100% of the electricity used by the manufacturer to produce this product have been measured and offset in accordance with The CarbonNeutral Protocol.



This pattern is included in the underwriters laboratory panel fabric recognition program. Additional testing of this U.L. recognized component fabric is not required on approved panels from participating manufacturers.

Guilford of Maine

guilfordofmaine.com

800 544 0200 Customer Care
616 554 2255 Fax

03/15