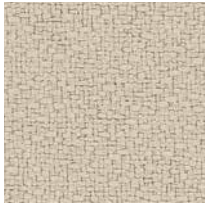


Anchorage 2335 (66")
Open House 2334 (54")

Multi-Purpose
 Upholstery
 Panel
 Acoustic



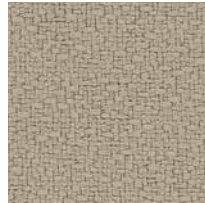
White*
2664



Birch
2129



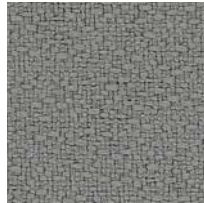
Vanilla
2130



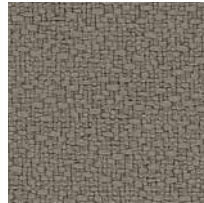
Angora
2035



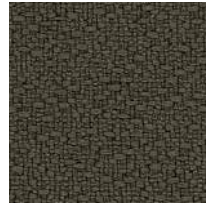
Straw
2034



Asteroid
2053



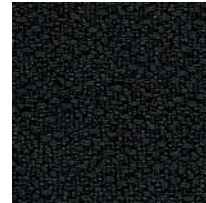
Goose
2049



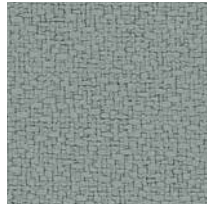
Fossil
2093



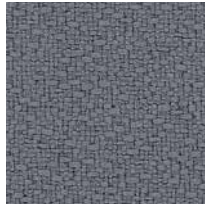
Graphite
2079



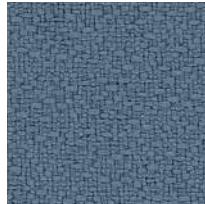
Onyx
2016



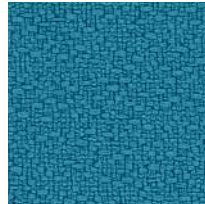
Slate
2017



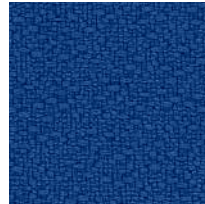
Wolf
2027



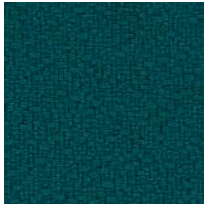
Quarry Blue
2026



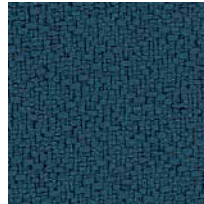
Waterfall
2691



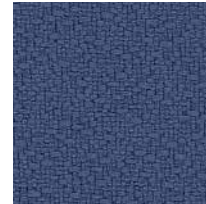
Lapis
2094



Sea
2077



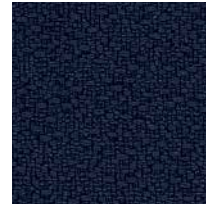
Deep Water
2051



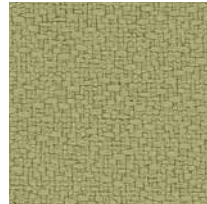
Thistle
2085



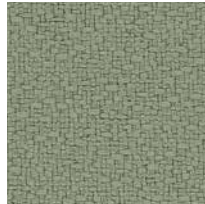
Cobalt
2045



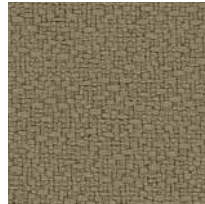
Midnight
2025



Green Olive
2048



Eucalyptus
2047



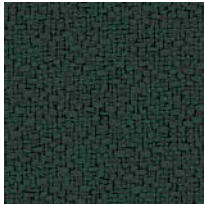
Cumin
2050



Green Apple
2087



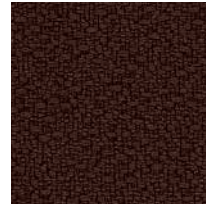
Willow
2028



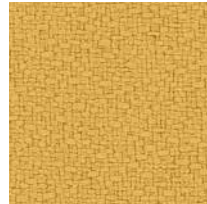
Pine Needle
2022



Henna
2052



Coffee Bean
2083



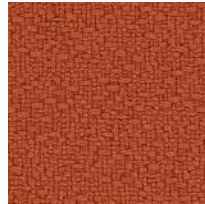
Sunshine
2082



Goldenrod
2090



Amber
2020



Pumpkin
2021



Poppy
2091



Magenta
2692



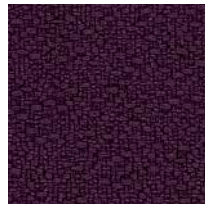
Geranium
2084



Red Delicious
2014



Mulberry
2044



Aubergine
2036

*Not recommended for use as Upholstery.

Anchorage 2335 (66") Open House 2334 (54")

Specifications

Content

35% post-consumer recycled polyester
65% pre-consumer recycled polyester

Weight

2334 - 13.1 ± 1.0 oz./lin. yd.
2335 - 15.0 ± 1.0 oz./lin. yd.

Width

2334 - 54" min. useable
2335 - 66" min. useable

Repeat

none

Backing

none


Treatment


none


Cleaning Code

Standard Care Label W-S. Clean with water based cleaning agents, foam or pure, water free solvents. Vacuuming or light brushing is recommended to prevent dust and soil buildup.

Performance


 **Colorfastness to Light (AATCC 16 Option 3)**
Grade 4 min. at 40 hours


 **Colorfastness to Crocking (AATCC 8)**
Grade 4 min. dry & Grade 3 min. wet

 **Breaking Strength (ASTM D5034)**
275 lbf min. warp and fill

Seam Slippage (ASTM D4034)
50 lbf min. warp and fill

Pilling Resistance (ASTM D3511)
Class 4 min.

 **Flammability**
CA Technical Bulletin 117-2013 Section 1
NFPA 260/UFAC Fabric Classification - Class I
ASTM E84 Class I or A

 **Abrasion (ASTM D4157)**
250,000 double rubs min. cotton duck

ACT registered certification marks.

Guilford of Maine

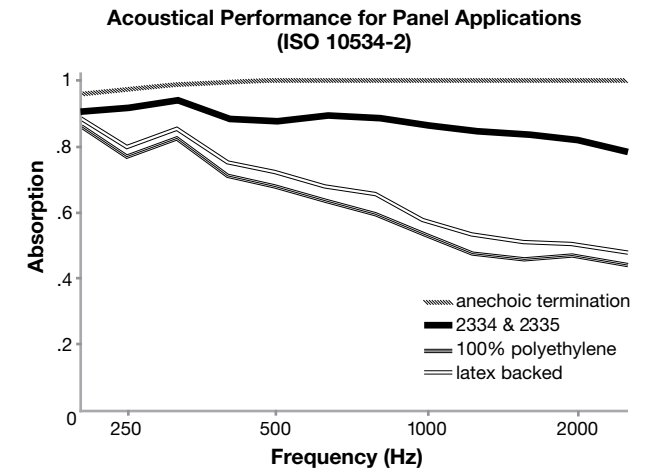
guilfordofmaine.com

800 544 0200 Customer Care
616 554 2255 Fax

06/15

Acoustical Performance

The plot below summarizes impedance tube measurements of absorption of an anechoic termination and various fabrics in front of the anechoic termination.



NRC of anechoic termination
1.00

NRC of fabric in front of anechoic termination
.85

Miscellaneous

Every effort has been made to ensure color accuracy of the digital images, however, please order a sample before specification. Application testing of this product is recommended. This is a directional fabric. Open House 2334 carries a 10 year performance warranty when used as upholstery.

Please specify when ordering whether 54" or 66" width is needed. Dye lots may vary. Differences may also occur between corresponding colors of Anchorage 2335 and Open House 2334.

Proudly woven in the USA supporting our local communities.

Visit guilfordofmaine.com for samples.



Terratex is a registered trademark of True Textiles, Inc. and designates fabrics that are made from 100% recycled or compostable material using increasingly sustainable manufacturing practices to produce a high quality product that is recyclable at the end of its useful life.



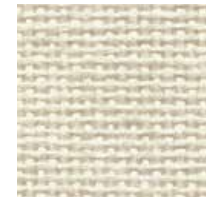
CO₂ emissions from 100% of the electricity used by the manufacturer to produce this product have been measured and offset in accordance with The CarbonNeutral Protocol.



This pattern is included in the underwriters laboratory panel fabric recognition program. Additional testing of this U.L. recognized component fabric is not required on approved panels from participating manufacturers.

FR701® 2100

Panel Acoustic



Eggshell
144



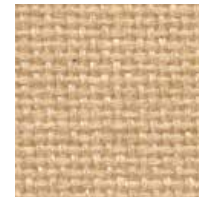
Wheat
130



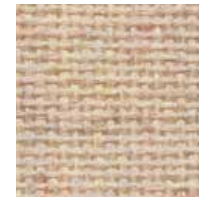
Bone
748



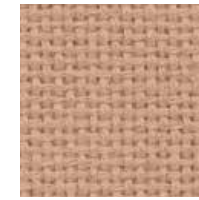
Buff
460



Straw
747



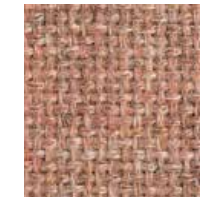
Vanilla Neutral
403



Terra
751



Cherry Neutral
400



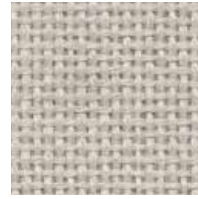
Cinnabar
422



Rose Quartz
390



Quartz
380



Pearl
481



Desert Sand
758



Apricot Neutral
404



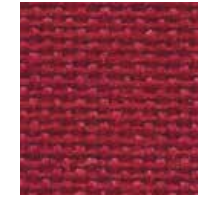
Pumice
423



Bronze
545



Sienna
475



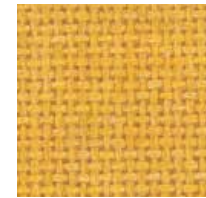
Red
799



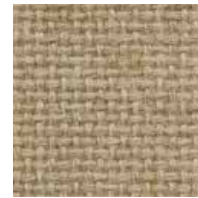
Claret Accent
418



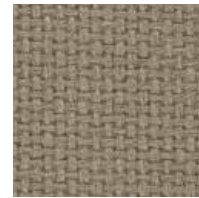
Deep Burgundy
556



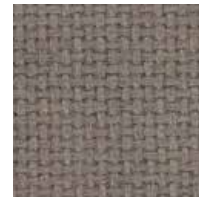
Sunshine
797



Light Moss
754



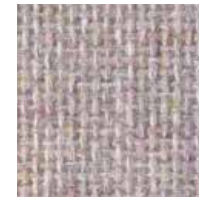
Earth
792



Moleskin
796



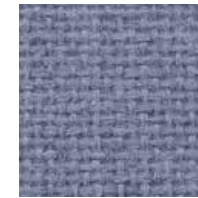
Chocolate
793



Lavender Neutral
405



Lilac
752



Violet
753



Amethyst
424



Iris
798



Dune
749



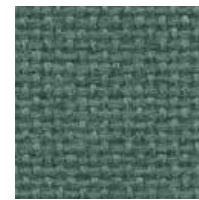
Leaf
755



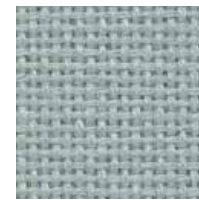
Stream
757



Aquamarine
381



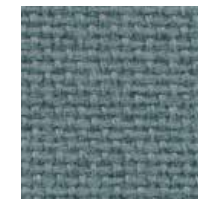
Blue Spruce
467



Eucalyptus
468



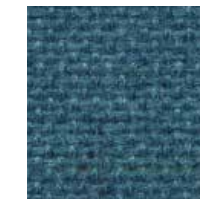
Green Neutral
402



Lake
756



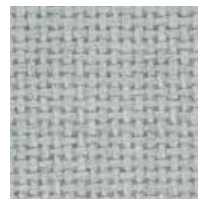
Chrome Green
549



Ultramarine
470



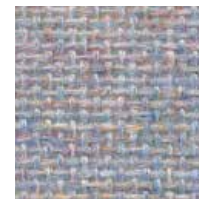
Verte Papier
561



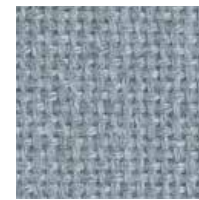
Coin
794



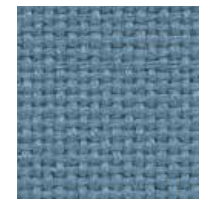
Blue Papier
539



Blue Neutral
401



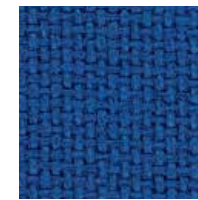
Crystal Blue
175



Bayberry
486



Wedgewood
150



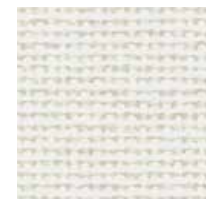
Cobalt
420



Baltic
153



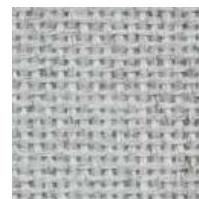
Blue Plum
553



White
224



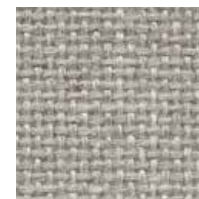
Opal
394



Silver Papier
538



Silver Neutral
406



Cement Mix
750



Steel Grey
471



Grey Mix
238



Flannel
795



Medium Grey
298



Black
408

FR701® 2100

Panel
Acoustic

Specifications

Content

100% post-consumer recycled polyester

Weight

16.0 ± 0.5 oz./lin. yd.

Width

66" min. useable


Repeat


none


Cleaning Code


Standard Care Label W-S. Clean with water based cleaning agents, foam or pure, water free solvents. Vacuuming or light brushing is recommended to prevent dust and soil buildup.

Performance

 **Colorfastness to Light (AATCC 16 Option 3)**
Grade 4 min. at 40 hours

 **Colorfastness to Crocking (AATCC 8)**
Grade 4 min. dry & Grade 3 min. wet

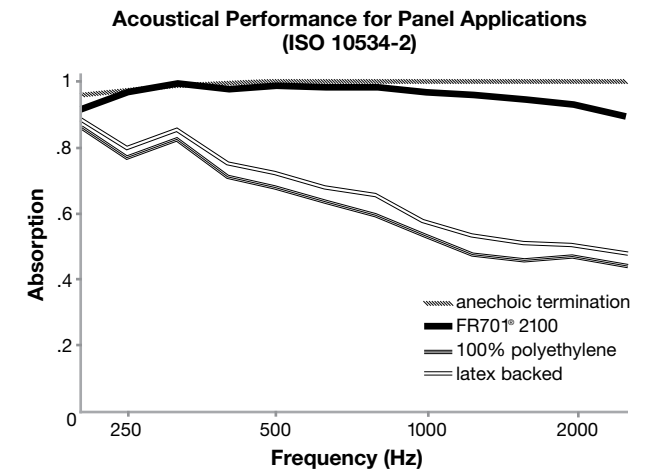
 **Breaking Strength (ASTM D5034)**
150 lbf min. warp and fill

 **Flammability (ASTM E84)**
Class I or A

*ACT® registered certification marks.

Acoustical Performance

The plot below summarizes impedance tube measurements of absorption of an anechoic termination and various fabrics in front of the anechoic termination.



NRC of anechoic termination
1.00

NRC of fabric in front of anechoic termination
.95

Miscellaneous

Every effort has been made to ensure color accuracy of the digital images, however, please order a sample before specification. Application testing of this product is recommended. Colors may vary between dye lots. This is a non-directional fabric.

Proudly woven in the USA supporting our local communities.

Visit guilfordofmaine.com for samples.



Terratex is a registered trademark of True Textiles, Inc. and designates fabrics that are made from 100% recycled or compostable material using increasingly sustainable manufacturing practices to produce a high quality product that is recyclable at the end of its useful life.



CO₂ emissions from 100% of the electricity used by the manufacturer to produce this product have been measured and offset in accordance with The CarbonNeutral Protocol.



This pattern is included in the underwriters laboratory panel fabric recognition program. Additional testing of this U.L. recognized component fabric is not required on approved panels from participating manufacturers.

Guilford of Maine

guilfordofmaine.com

800 544 0200 Customer Care
616 554 2255 Fax

03/15