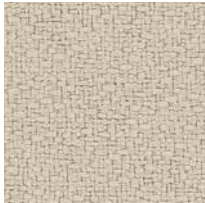


**Anchorage 2335 (66")**  
**Open House 2334 (54")**

Multi-Purpose  
 Upholstery  
 Panel  
 Acoustic



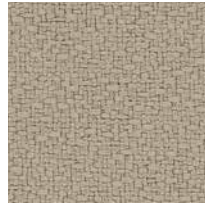
**White\***  
2664



**Birch**  
2129



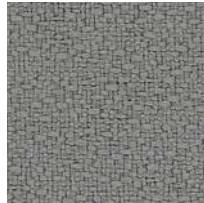
**Vanilla**  
2130



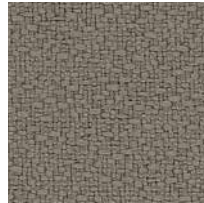
**Angora**  
2035



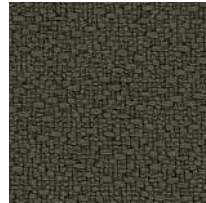
**Straw**  
2034



**Asteroid**  
2053



**Goose**  
2049



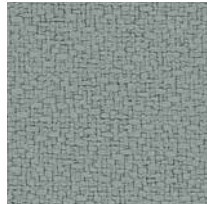
**Fossil**  
2093



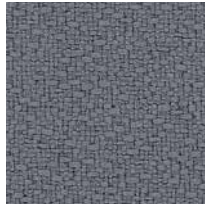
**Graphite**  
2079



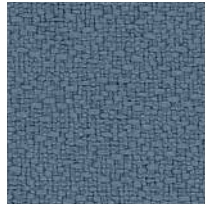
**Onyx**  
2016



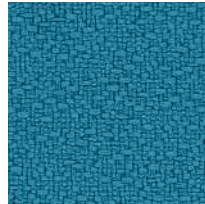
**Slate**  
2017



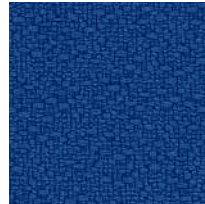
**Wolf**  
2027



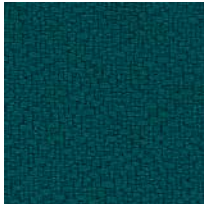
**Quarry Blue**  
2026



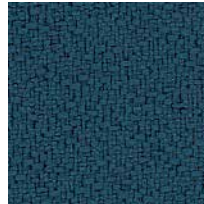
**Waterfall**  
2691



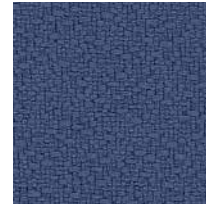
**Lapis**  
2094



**Sea**  
2077



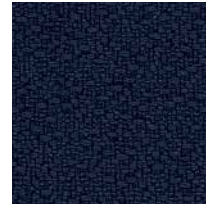
**Deep Water**  
2051



**Thistle**  
2085



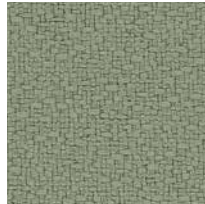
**Cobalt**  
2045



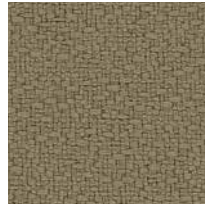
**Midnight**  
2025



**Green Olive**  
2048



**Eucalyptus**  
2047



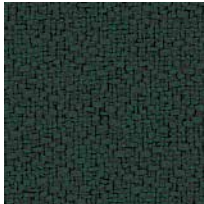
**Cumin**  
2050



**Green Apple**  
2087



**Willow**  
2028



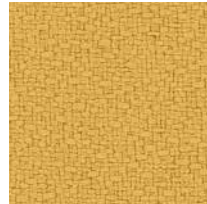
**Pine Needle**  
2022



**Henna**  
2052



**Coffee Bean**  
2083



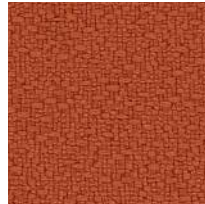
**Sunshine**  
2082



**Goldenrod**  
2090



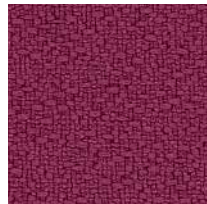
**Amber**  
2020



**Pumpkin**  
2021



**Poppy**  
2091



**Magenta**  
2692



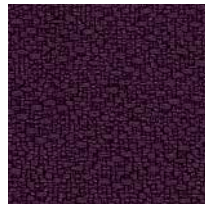
**Geranium**  
2084



**Red Delicious**  
2014



**Mulberry**  
2044



**Aubergine**  
2036

\*Not recommended for use as Upholstery.

# Anchorage 2335 (66") Open House 2334 (54")

## Specifications

### Content

35% post-consumer recycled polyester  
65% pre-consumer recycled polyester

### Weight

2334 - 13.1 ± 1.0 oz./lin. yd.  
2335 - 15.0 ± 1.0 oz./lin. yd.

### Width

2334 - 54" min. useable  
2335 - 66" min. useable

### Repeat

none

### Backing

none


### Treatment


none


## Cleaning Code

Standard Care Label W-S. Clean with water based cleaning agents, foam or pure, water free solvents. Vacuuming or light brushing is recommended to prevent dust and soil buildup.

## Performance


 **Colorfastness to Light (AATCC 16 Option 3)**  
Grade 4 min. at 40 hours


 **Colorfastness to Crocking (AATCC 8)**  
Grade 4 min. dry & Grade 3 min. wet

 **Breaking Strength (ASTM D5034)**  
275 lbf min. warp and fill

**Seam Slippage (ASTM D4034)**  
50 lbf min. warp and fill

**Pilling Resistance (ASTM D3511)**  
Class 4 min.

 **Flammability**  
CA Technical Bulletin 117-2013 Section 1  
NFPA 260/UFAC Fabric Classification - Class I  
ASTM E84 Class I or A

 **Abrasion (ASTM D4157)**  
250,000 double rubs min. cotton duck

\*ACT\* registered certification marks.

## Guilford of Maine

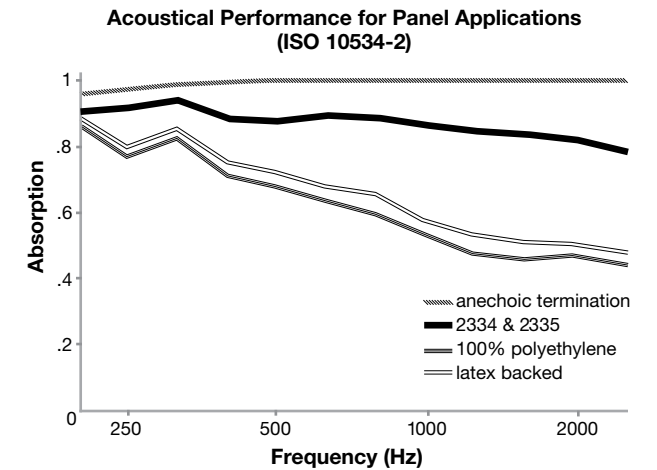
guilfordofmaine.com

800 544 0200 Customer Care  
616 554 2255 Fax

06/15

## Acoustical Performance

The plot below summarizes impedance tube measurements of absorption of an anechoic termination and various fabrics in front of the anechoic termination.



**NRC of anechoic termination**  
1.00

**NRC of fabric in front of anechoic termination**  
.85

## Miscellaneous

Every effort has been made to ensure color accuracy of the digital images, however, please order a sample before specification. Application testing of this product is recommended. This is a directional fabric. Open House 2334 carries a 10 year performance warranty when used as upholstery.

Please specify when ordering whether 54" or 66" width is needed. Dye lots may vary. Differences may also occur between corresponding colors of Anchorage 2335 and Open House 2334.

Proudly woven in the USA supporting our local communities.

Visit [guilfordofmaine.com](http://guilfordofmaine.com) for samples.



Terratex is a registered trademark of True Textiles, Inc. and designates fabrics that are made from 100% recycled or compostable material using increasingly sustainable manufacturing practices to produce a high quality product that is recyclable at the end of its useful life.



CO<sub>2</sub> emissions from 100% of the electricity used by the manufacturer to produce this product have been measured and offset in accordance with The CarbonNeutral Protocol.



This pattern is included in the underwriters laboratory panel fabric recognition program. Additional testing of this U.L. recognized component fabric is not required on approved panels from participating manufacturers.